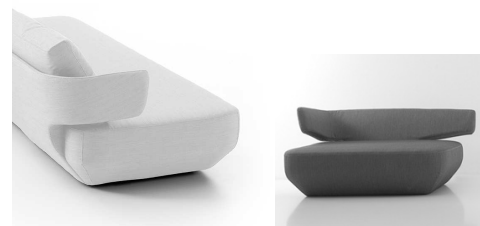


**TEST CERTIFICATE Nº 230.Z.1604.234.EN.1**

References: 1602014-02, 03C -i

PRODUCT: LEVITT armchair and sofa**COMPANY:** **VICCARBE HABITAT, S.L.**
PG. Norte, C/Travesía 1 al camí Racó S/N
46469 BENIPARRELL (VALENCIA) SPAIN
Phone: 34 9612010 - Fax: 34961211211
www.viccarbe.com**TEST:** Compliance with the following standards:
ANSI/BIFMA X5.4-2012 Lounge and Public Seating. Test.
UNE-EN 16139:2013 Furniture. Strength, durability and safety. Requirements for non domestic seating.**RESULT:** Satisfactorily complies with the specifications set by the ANSI/BIFMA X5.4-2012 and UNE-EN 16139:2013, level 1, according to the following tests,

TESTS	RESULT
Type of chair (single and multiple seating)	TYPE A
Safety. General requirements.	CORRECT
Backrest horizontal static load test. ($F_{h1} = 667 \text{ N}$, $F_{h2} = 1112 \text{ N}$, $t=1 \text{ min.}$)	CORRECT
Backrest vertical static load test. ($F_{v1} = 890 \text{ N}$, $F_{v2} = 1334 \text{ N}$, $t=1 \text{ min.}$)	CORRECT
Seat and back static load test. ($F_v=1600 \text{ N}$, $F_h=560 \text{ N}$, 10 times)	CORRECT
Seat front edge static load test. ($F_v=1300 \text{ N}$, 10 times)	CORRECT
Seat and back durability test. ($F_v = 1000 \text{ N}$, $F_h=300 \text{ N}$, $n=120000$ cycles)	CORRECT
Backrest durability test. Vertical. ($F_v=890 \text{ N}$, $n=10000$ cycles)	CORRECT
Seat front edge durability test. ($F_v = 800 \text{ N}$, $n=50000$ cycles)	CORRECT
Arm durability test. Horizontal. ($F = 445 \text{ N}$, $n = 50000$ cycles)	CORRECT
Arm durability test. Vertical. ($F = 667 \text{ N}$, $n = 30000$ cycles)	CORRECT
Seating durability test. ($M=57 \text{ kg}$, $h=30 \text{ mm.}$, $n=100000$ cycles)	CORRECT
Arm Strength test. Horizontal static load. ($F_{h1}=592 \text{ N}$, $F_{h2}=890 \text{ N}$, $t=1 \text{ min.}$)	CORRECT
Arm Strength test. Vertical static load. ($F_{v1}=780 \text{ N}$, $F_{v2}=1125 \text{ N.}$, $t=1 \text{ min.}$)	CORRECT
Impact test. ($h=152 \text{ mm.}$, $M_1=102 \text{ kg}$, $M_2=136 \text{ kg.}$)	CORRECT
Back impact test. ($\alpha=38^\circ$, $h=210 \text{ mm.}$, 10 times)	CORRECT
Arm impact test. ($\alpha=38^\circ$, $h=210 \text{ mm.}$, 10 times)	CORRECT
Leg forward static load test. ($Q=1000 \text{ N.}$, $F_h=500 \text{ N}$, 10 times)	CORRECT
Leg sideways static load test. $Q=1000 \text{ N.}$, $F_h=400 \text{ N}$, 10 times)	CORRECT
Unit drop test. ($h=120 \text{ mm}$ $n=2$)	CORRECT
Stability test.	STABLE

Paterna, April 13, 2016

Signed. José Emilio Nuévalos
Head of Furniture Laboratory

This certificate only refers to the samples tested by the AIDIMA laboratory.

The particular results of the tests are described in technical report reference: Ref.: 1602014-02, 03dated on 13/04/2016.

AIDIMA is a member of INNOVAWOOD, The European Network of Research and Training for the Forest, Wood and Furniture Industry, among whose members are: CATAS SPA (Italy), COSMOB (Italy), CTIB-TCHN (Belgium), DTI (Denmark), ELKEDE (Greece), EMPA (Switzerland), FCBA (France), HFA (Austria), IHD (Germany), ITD (Poland), SHR (Holland), SP Tråtek (Sweden), TRADA-FIRA (United Kingdom), University of Zagreb (Croatia), VTT (Finland), WKI (Germany).